

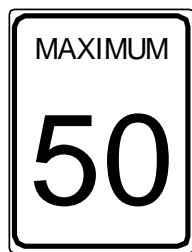
MODEL PM2626 PRODUCT DATA SHEET



Otto is a portable road safety device using GPS technology that provides you with information about your driving environment. Otto was designed to promote safe driving by complementing existing roadway signage. Otto has a digital speed map of the posted speed limits in your community along with a number of designated safety zone points of interest.



Otto uses the GPS signals to calculate your speed and position and to compare this with the underlying map information to alert you to the upcoming safety zone area or to alert you if you are driving above the posted speed limit.



Otto is also a "black box" recording device, and records where you drove and how fast you were going. You can use this information to keep track of your trips and vehicle use, either for business purposes or for personal interest.

Otto is not a radar detector.

Otto is not a GPS navigation system that includes an LCD screen showing the map of the city with driving directions. Otto is not illegal to own and to use.

Otto can save money -- both direct savings by way of potential fines and accidents and indirect savings resulting from driver licensing fees and insurance premiums.

Otto can help you to save the environment -- slowing down will reduce gas consumption and emissions.

Otto can help you save lives.



MODEL PM2626 PRODUCT FEATURES

- ✓ Road safety alerts using lights and sounds
- ✓ 12-Channel GPS receiver
- ✓ Integrated GPS antenna
- ✓ Memory stores multiple coverage maps & data logs
- ✓ Auto power-on with external power applied
- ✓ Auto power-off with battery power
- ✓ USB 2.0 Full Speed PC interface
- ✓ More than 300 hours of data logging

ACCESSORIES

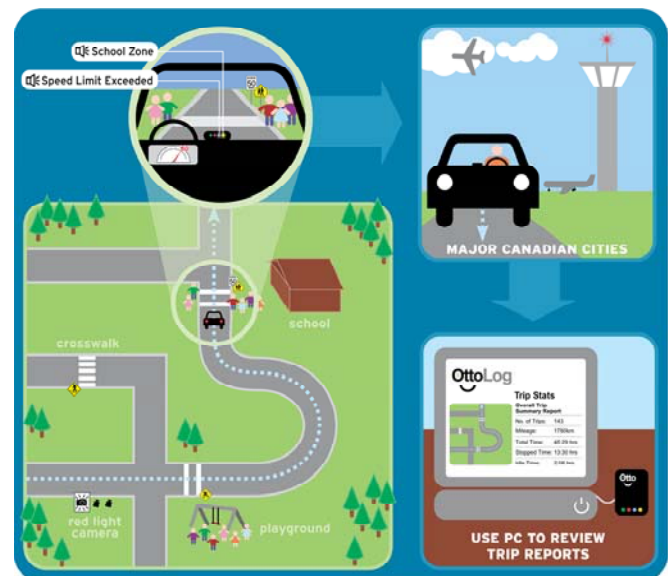
- ✓ Metal bracket for windshield installation
- ✓ OBDII power adapter for "always-on" operation

Otto comes pre-loaded with a highly accurate and detailed representation of your city's streets.

Take it with you to other cities and drive more comfortably in a less familiar environment.

Connect Otto to your PC and receive map updates.

Upload your data logs and view your trip statistics.



BE SAFE! BE CERTAIN

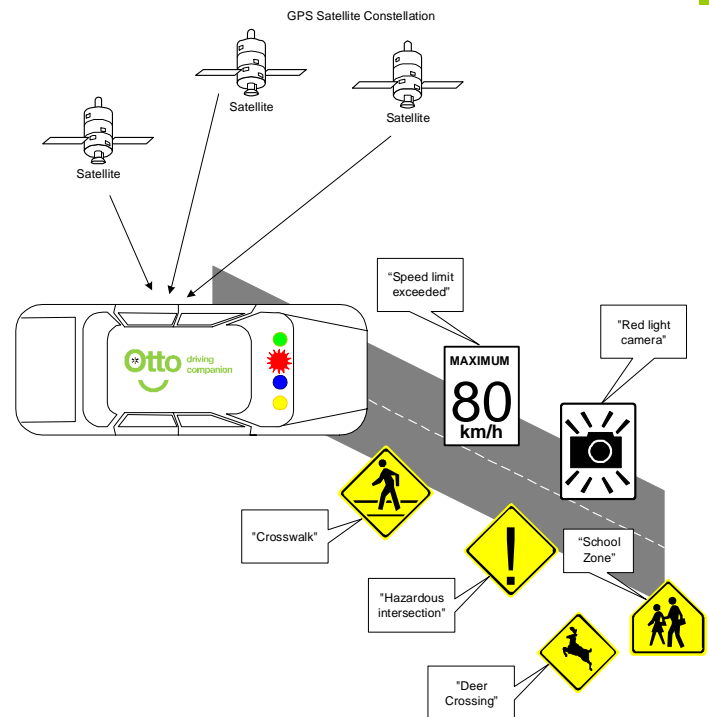
WWW.MYOTTOMATE.COM

MODEL PM2626 PRODUCT DATA SHEET



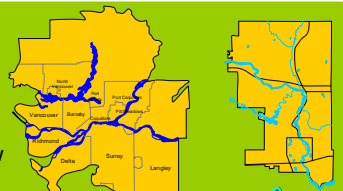
MODEL PM2626 PRODUCT SPECIFICATIONS

DIMENSIONS	12.8 cm x 7 cm x 3.2 cm
WEIGHT	350 gr without batteries
OPERATING TEMPERATURE	-30 C to + 40 C
VEHICLE POWER SOURCE	+5V DC at 350 mA through the USB connector and supplied power adapter using the cigarette lighter socket
BATTERY POWER SOURCE	Two AA sized batteries (optional, not included)
GPS RECEIVER	12-Channel, 1757 MHz with built in omni-directional antenna
GPS POSITION ACCURACY	10 meters, updated once/sec
GPS SPEED ACCURACY	1.0 km/hr, updated once/sec
DATA INTERFACE	USB 2.0 full speed mini-B type connector
MAP SOURCE	Proprietary municipal database and map format
AUTO POWER-ON	When power applied to unit, device will auto power-on
AUTO POWER-OFF	When operated with batteries, device will turn-off after 5 minutes of no movement
PHOTOCELL	Auto adjustment of LED intensity based on ambient lighting
SPEED LIMIT SETTING	1 to 10% allowance over the posted speed limit
LOCATION ALERTS	School Zones, playgrounds, Red Light Camera intersections, Hazardous intersections, Pedestrian Corridors, Deer Crossings
DATA LOGGED	Date, Time, Location (Latitude, Longitude), Speed, Posted Speed Limit, Acceleration
LOGGING CAPACITY	User Configurable, up to 320 hours based on 1 second samples
TRIP REPORTS	Total distance driven, total driving time, total idling time, total stopped and unlocked time, trip classification for peak commute, off-peak, night time and weekend
DATA LOG SECURITY	Easy access, Device linked, Device linked plus password
DATA LOG VIEWING	Viewable on GoogleEarth™ and Microsoft Streets & Trips™
DATA EXPORT	GPX, Streets & Trips™, CSV
USER SOFTWARE REQUIRED	Microsoft Internet Explorer™ Browser and GoogleEarth™



MUNICIPAL MAP COVERAGE AREAS (as of January-2007)

GREATER VANCOUVER REGIONAL DISTRICT including:
 Vancouver - West Vancouver - North Vancouver - Burnaby - Richmond - Delta - Port Moody - Coquitlam - Port Coquitlam - Pitt Meadows - New Westminister - Surrey - Langley



CALGARY



EDMONTON including St. Albert and Sherwood Park



RED DEER and Highway 2 running between Calgary and Edmonton



SASKATOON



WINNIPEG



OTTAWA

KITCHENER-WATERLOO



BE SAFE! BE CERTAIN

WWW.MYOTTOMATE.COM